

# Proportional polyphosphate doser

Art. 9087



100% MADE IN ITALY 

## Function

Pintossi + C polyphosphate dosers have been designed to be installed on the pipes that supply water to boilers and water heaters or in other appliances such as washing machines and dishwashers to **reduce the presence of limestone**, very useful in systems with particularly hard water. Thanks to the gradual and balanced release of polyphosphates in the fluid, these dosers ensure **constant and lasting protection** to all the internal components of the various devices present in the system, which can be attacked and corroded by the action of limestone. In fact, the polyphosphates create a protective film inside the pipes, preventing the precipitation of calcium and magnesium carbonates.

The proportional release of polyphosphate in the fluid is granted by the specific design of the doser, composed by a secondary circuit where a part of the fluid is conveyed thanks to **Venturi effect**, given by the narrowing of the circuit section. The doser are supplied with the first refill.

Equipped with a key for opening/closing the cap and gaskets.



## Product range

Art.9087	Polyphosphate doser with swivel nuts and by-pass	1/2"
Art.9087	Polyphosphate doser	1" with brass reduction 3/4"
Art.9082	Refill cartridge	

## Technical specifications

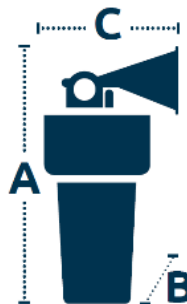
Fluids:	Water
Max. working temp.:	45°C art.9087
Max. working pressure:	5 bar
Flow rate:	1.300 l/h (1/2") – 2.400 l/h (3/4") – 3.600 l/h (1")

## Materials

Body:	Transparent and non-toxic resin
Nut and connections:	Brass CW617N
Gaskets:	Fiber

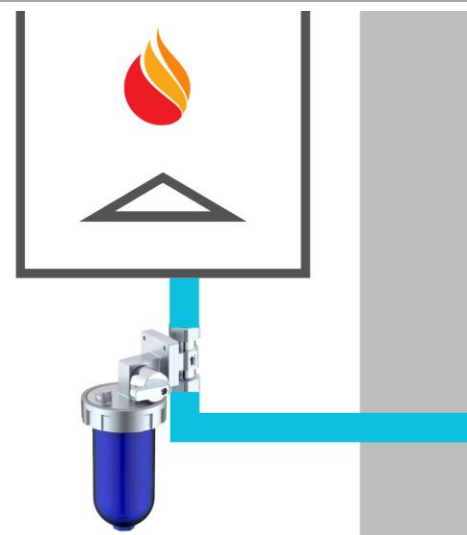
## Dimensions

MEASURE	A	B	C
1/2"	160	75	100
3/4" - 1"	240	100	180



## Installation

The Ministerial Decree June 2015 declares the **mandatory installation of a polyphosphate dispenser** regardless of what type of use is made of the heat generator, whether only for hot water or also for heating. This concerns both the case of new heating systems or renovations or partial operations. The doser art.9087 is particularly suitable for installation in appliances such as boilers and water heaters. The product is composed by connections and cap in brass that make it particularly resistant to high pressures. 1/2" version is equipped with connections with swiveling nuts which makes the installation very easy, using the included fiber gaskets.



## Rotatable plate

The plate with the female connection can be rotate 90°, choosing the best solution that fit the required installation. The four screws must be unscrew using an hexagonal allen key in order to disassemble the plate and rotate it. The fluid flow must respect the arrow marked on the fitting between the two connections.



## Maintenance

Thanks to the transparent container, the control and inspection operations of Pintossi+C polyphosphate dosers are particularly easy. It is recommended to periodically examine the dispenser to monitor the level of polyphosphates inside the container. If the level is low, it is necessary to add powder to keep the protective action working. Approximately, a cartridge can last for about 6/12 months depending on the frequency of use of the device on which it is installed.

The cartridge of the doser art.9087 uses polyphosphate powder and can be refilled with art. 9082. By checking the height of the polyphosphate inlet tube inside the container and the relative measurement signal marked with the MIN and MAX symbols, you can monitor the level of polyphosphates and their dissolution. Thanks to the presence of the **by-pass valve incorporated**, the replacement and integration of refills can take place when the system is working, by carrying out the following operations:

1. Close the by-pass valve to prevent the passage of fluid into the doser;
2. Open the discharge valve to reduce internal pressure in the polyphosphate housing and make easier the ring opening;
3. Open the ring using the appropriate key;
4. Remove the exhaust plastic housing;
5. Open the plug of the new refill art.9082 and put it into the doser housing;
5. Close the discharge valve and the doser;
6. Re-open the by-pass valve.



## Warnings

- The dosers must be installed by qualified technicians
- Before installation or maintenance check that the circuit is isolated.
- Make sure of having sufficient space for maintenance or repair.
- Make sure the installation of the system is properly made before the filter is connected to the system.
- In presence of hydraulic shocks, a water-hammer absorber is recommended.
- In case of pressures higher than 3 bar it is necessary to install a pressure reducing valve upstream of the doser.
- Use only original parts supplied by Pintossi + C.

The manufacturer is not responsible for any damage to people, animals and things in case of inappropriate use, not in accordance with the operating instructions or in case of tampering with the filter.

In addition, the manufacturer disclaims any responsibility in the following cases:

- Unsuitable operating temperature.
- Pressure variations or water hammering.
- Unauthorized modifications or interventions.
- Use of not original parts.
- Partial or total negligence of instructions.